

## Unit 24:

# Regions of the head & neck (revision)

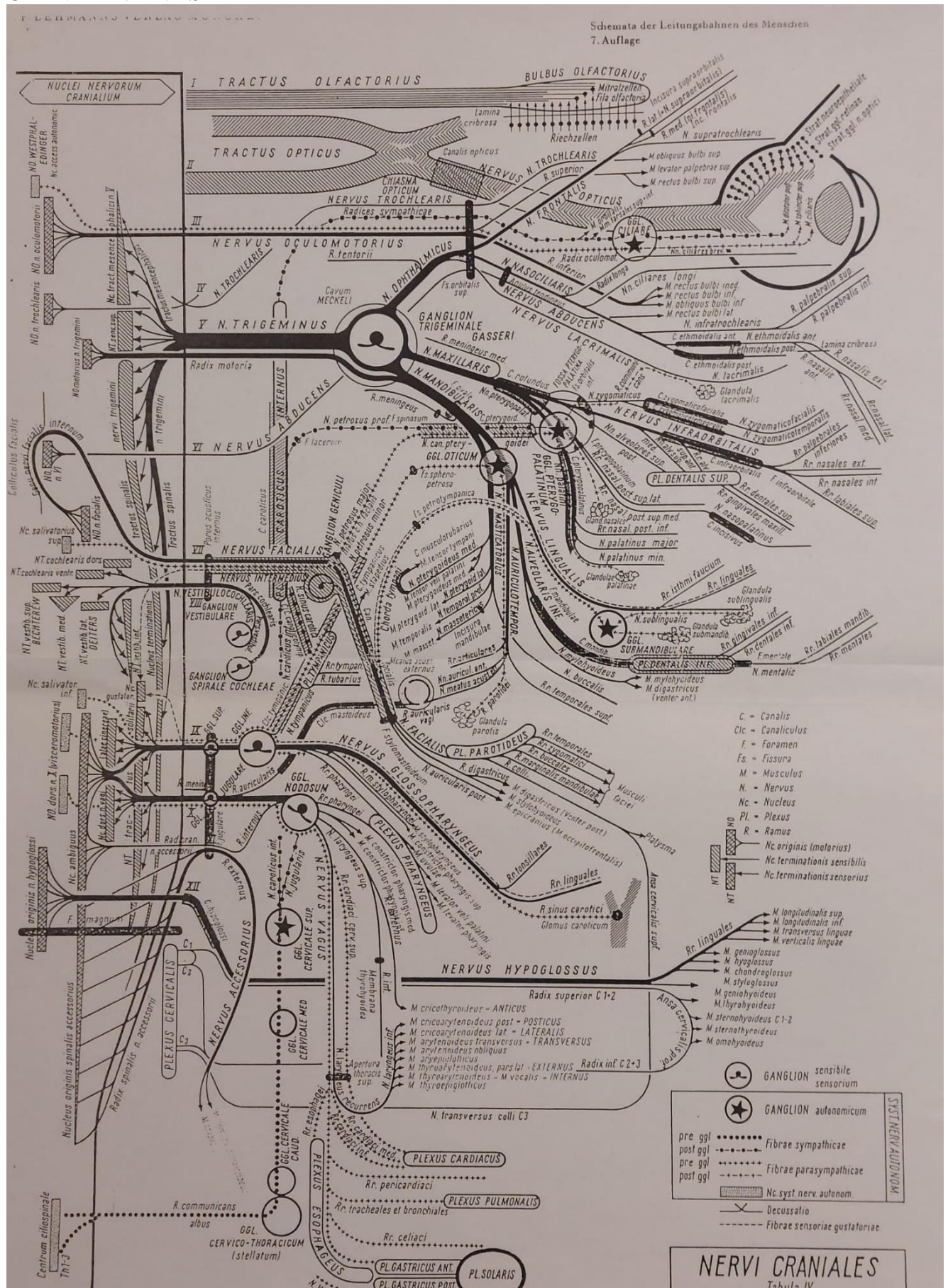
### GENERAL OBJECTIVES:

- Following cranial nerves from brainstem nuclei to their effectors/receptors
- Efferent fibres in cranial nerves should be 'traced' from the upper motor neurons (in precentral gyrus) via interneurons and lower motor neurons to their effector muscles (striated or smooth) or glands
- Afferent fibres should be followed from specific receptors on periphery to sensory ganglia (where cell bodies of the first order neurons are located) to somatic/visceral/general/special sensory nuclei in the brainstem and from nuclei to the corresponding primary sensory cortex in the brain
- Paths and branching of principle arteries in the head and neck
- Paths and tributaries of principle veins in the head and neck

### SPECIFIC OBJECTIVES

A picture is worth a thousand words!

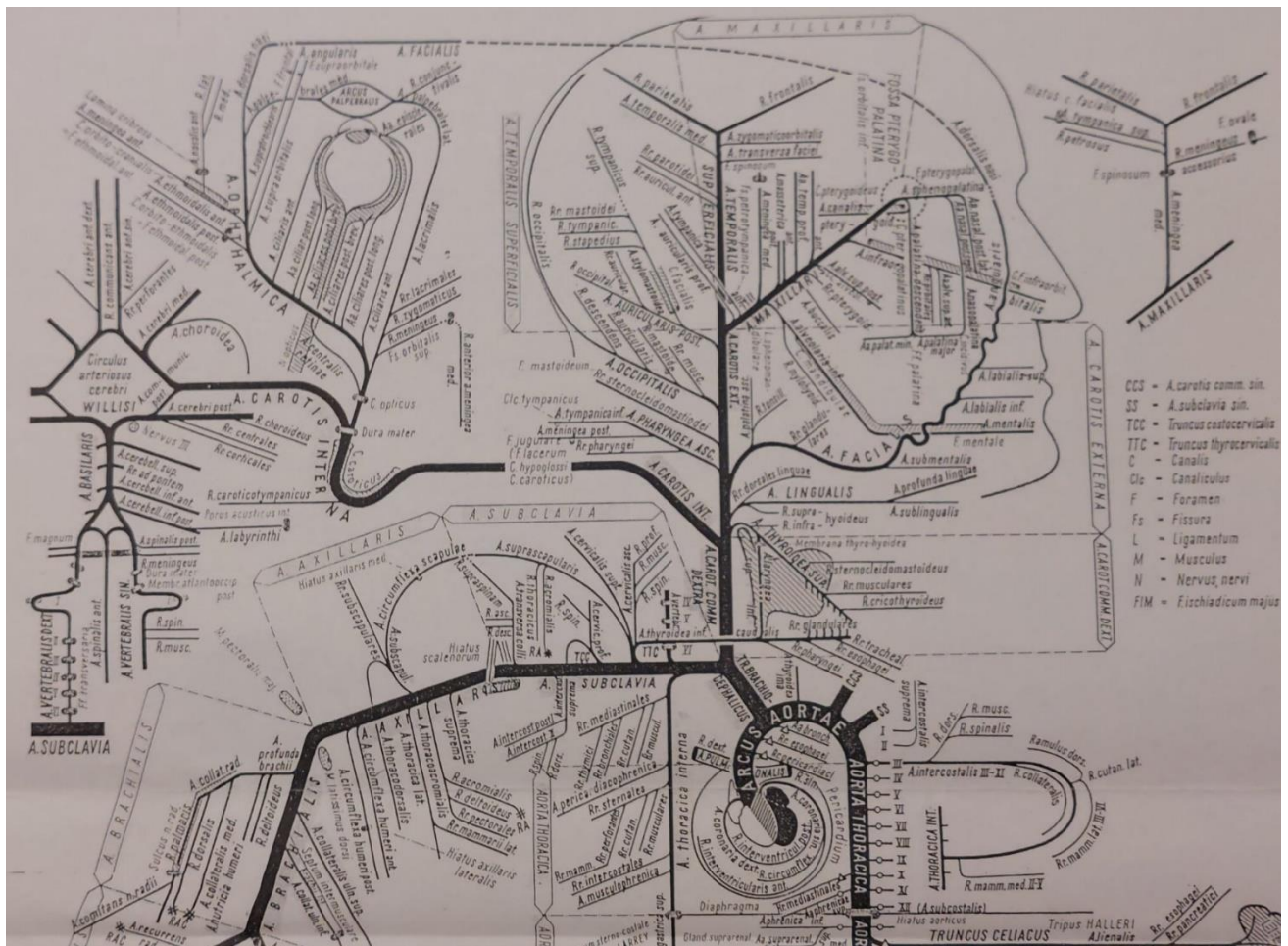
# CRANIAL NERVES – PERIPHERAL PART





[illegible]

# ARTERIES OF THE HEAD AND NECK





[illegible]